



2017

STONEWARE

Product Catalog

Opaque | Translucent | Crystals | Matte | Wash | and more...

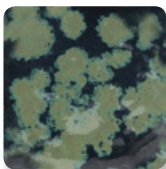


MaycoColors.com

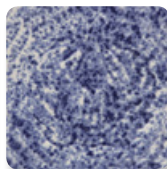
NEW STONEWARE glazes 2017



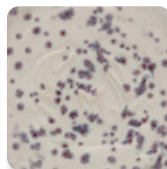
SW-150
Celadon Bloom



SW-151
Olive Float



SW-152
Blue Splatterware



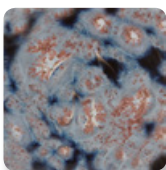
SW-153
Indigo Rain



SW-154
Shipwreck



SW-155
Winter Wood



SW-156
Galaxy



SW-158
Lilac Matte



SW-159
Blue Matte



SW-160
Chartreuse Matte



SW-161
Yellow Matte



SW-162
Pink Matte



SW-163
Soft Red Matte



SW-149
Crackle White



SW-164
Satin Patina



SW-004
Zinc-Free Clear



NEW
Designer
Liner



SG-411
Purple



Glazes have been fired to cone 6 on white stoneware body.

MaycoColors.com

Stoneware Opaque Glazes

Stoneware glazes move and float without running off your work. Many will break over textures, revealing secondary colors and shades.



SW-100
Blue Surf



SW-109
Capri Blue



SW-101
Stoned Denim



SW-121
Smoke



SW-108
Green Tea



SW-125
Purple Mint



SW-134
Eggplant



SW-128
Cordovan



SW-133
Copper Ore



SW-130
Copper Jade



SW-129
Copper Float



SW-119
Cinnabar



SW-112
Tiger's Eye



SW-113
Speckled Plum



SW-127
Olivine



SW-126
Polished Pebbles



SW-122
Maycoshino



SW-131
Birch



SW-110
Oyster



SW-132
Mirror Black

For additional resources see Mayco's website for detailed application advice, product safety data sheets (SDS) and more images.

Available Sizes

- » Wide mouth Pints
- » 5 lbs & 25 lbs Dry (most glazes)
- » Washes available in 4 oz only



Matte Stoneware Glazes

Choose from solid shades to those that create interesting surface texture as they move and break. Application thickness is a key to making mattes work for you.



SW-124
Matte Maycoshino



SW-103
Sisal



SW-145
Tea Dust



SW-144
Lava Rock



SW-104
Black Walnut



SW-111
Wrought Iron



SW-140
Black Matte



SW-137
Storm Gray



SW-142
Gray Matte



SW-105
Frost Blue



SW-102
Silver Sage



SW-107
Dunes



SW-136
Weathered Blue



SW-159
Blue Matte



SW-158
Lilac Matte



SW-162
Pink Matte



SW-163
Soft Red Matte



SW-139
Creamsicle



SW-138
Lemon Meringue



SW-161
Yellow Matte



SW-160
Chartreuse Matte



SW-135
Wintergreen



SW-164
Satin Patina



SW-143
Abalone



SW-106
Alabaster



SW-141
White Matte



SW-149
Crackle White

TIPS: Matte Stoneware Glazes

- Thicker glaze application will result in greater opacity; adjust your applications, methods to achieve the desired opacity.
- SW-136 Weathered Blue, SW-137 Storm Gray, SW-138 Lemon Meringue, SW-139 Creamsicle are unique glazes that change in appearance with number of glaze coats. One coat will display more color with additional coats will increase mottling and white variegation.

Translucent Stoneware Glazes

Translucent glazes add delicate color, allowing design work beneath to show through. These glazes heighten surface details where they gather and pool.



SW-209
Charcoal



SW-208
Camel



SW-204
Amber Topaz



SW-203
Root Beer



SW-206
Melon



SW-205
Coral



SW-207
Chambray



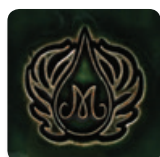
SW-123
Sapphire



SW-211
Glacier Blue



SW-212
Peacock



SW-120
Northern Woods



SW-210
Emerald



SW-202
Pistachio



SW-201
Turquoise



SW-250
White Opal



SW-251
Pink Opal



SW-252
Blue Opal



SW-253
Green Opal



SW-254
Yellow Opal



SW-255
Gray Opal

TIPS: Translucent Stoneware Glazes

- Mayco Translucent Glazes were designed to have a hint of color with 1 coat and deeper color with 2-3 coats.
- 1 coat will allow more of the clay body to show through the glaze. Subsequent coats deepen the color.
- Used alone, Translucent Stoneware glazes produce beautiful color variations, deepening with additional coats.



Crystal Stoneware Glazes

TIPS: Crystal Stoneware Glaze

- Crystal glazes are dazzling glazes that are designed to expand upon the surface with bursts of color.
- Crystals will settle to the bottom of the jar, and will need thoroughly mixed prior to painting as well as in-between each coat.
- Apply 2-3 coats using a fan or hake brush to the top two-thirds of the piece.
- During your last coat, use your brush to evenly distribute the crystals over the top two-thirds of the piece and move away from the bottom third.



SW-148
Lime Shower



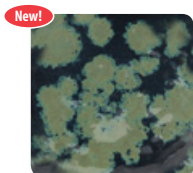
SW-146
Aurora Green



SW-150
Celadon Bloom



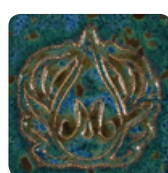
SW-147
Moonscape



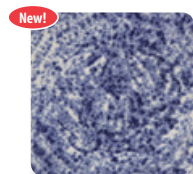
SW-151
Olive Float



SW-154
Shipwreck



SW-115
Midnight Rain



SW-152
Blue Splatterware



SW-116
Robin's Egg



SW-156
Galaxy



SW-153
Indigo Rain



SW-118
Sea Salt



SW-155
Winter Wood



SW-117
Honeycomb



Stoneware Clear Glazes

Mayco Stoneware Clear, Matte Clear and Crackle Matte Clear will preserve and enhance the surface of your work.



SW-001
Stoneware Clear

SW-001 Stoneware Clear is formulated to reach high fire temperatures up to cone 10.



SW-002
Matte Clear

SW-002 Matte Clear may turn to a satin finish in higher temperatures.



SW-003
Crackle Matte Clear

The crackle pattern in SW-003 Crackle Matte Clear may not develop at cone 10 temperatures. To highlight the crackle pattern, after firing wipe an acrylic or ink over the ware and wipe off, revealing and highlighting the cracking effect (*not suitable for food surfaces).



SW-004
Zinc-Free Clear

Zinc Free Clear is a specialty clear glaze designed for use on glazes containing chrome-based pigments. It ensures that you will get a brilliant, smooth and crystal clear surface over these colors.

Dipping with Mayco Stoneware Dry Glazes

Potters, teachers and hobbyists will love the ease of use this product offers.

Use Mayco Stoneware Dry glazes (SDs) for fast dipping and layering, creating natural flowing effects. Fine and uniform particle size and a thorough dry mixing process make Mayco Stoneware Dry glaze consistency so perfect that sieving is optional.

Available Sizes

- » 5 lbs
- » 25 lbs Dry (most glazes)





SW-401 Mayco Flux

Mayco Flux is a flowing glaze intended for use with other Mayco Stoneware glazes to enhance movement and promote reactions for interesting effects. Apply over or under other glazes, uniformly brushed or randomly dabbed on with a sponge. Designed to fire to cone 5/6; can be fired to cone 9/10 in oxidation or reduction firings.

Mayco Flux layered with the following Stoneware Glazes:



SW-126
Polished Pebbles



SW-134
Eggplant



SW-130
Copper Jade



SW-104
Black Walnut



SW-210
Emerald



Stroke & Coat



Available sizes

- » 2 oz squeeze
- » 8 oz squeeze
- » 16 oz squeeze
- » Gallons - available in 12 colors

Mayco Stoneware Glazes work Great with Stroke & Coat®

Artists can incorporate and combine other Mayco products with our Stoneware glazes. Use Stroke and Coat® with Stoneware glazes for an intense splash of color or add designs for unique results. Works great with SW-401 Mayco Flux!



Designer Liner



Designer Liner at Mid-Range

The most intricate details can be created with Mayco's amazing Designer Liner under any Stoneware or Stoneware Clear glazes. Designer Liner will fire to a matte finish without Stoneware Clear or Stoneware applied overtop.



SG-401
Black



SG-402
White



SG-403
Red



SG-404
Blue



SG-405
Green



SG-406
Brown



SG-407
Yellow



SG-408
Orange



SG-409
Bright Green



SG-410
Bright Blue



SG-411
Purple

*Tiles above applied to buff stoneware clay body and fired to Cone 6.

TIPS: Designer Liner

- Shake well. Apply even pressure to bottle to allow the Designer Liner to flow onto desired surface.
- Thickness of line will depend on how much pressure applied to the Designer Liner as well as how slow or fast the continuation of the line is drawn.
- Allow Designer Liner to completely dry before applying transparent or clear glaze over Designer Liner.



Learn more
on YouTube.



Stoneware Wash

Mayco Stoneware Washes are a multi-purpose product with limitless possibilities. These washes can be used alone for staining techniques or with any glaze from low-fire (cone 05/06) up to cone 10. They are beautiful in oxidation or reduction and can expand the glaze palette for an artist or teacher. Mayco Stoneware Washes are metallic glaze colorants formulated for ease of use and versatility. Washes are highly concentrated and available only in 4oz jars.



SW-301
Iron Wash



SW-302
Rutile Wash



SW-303
Manganese Wash



SW-304
Copper Wash



SW-305
Cobalt Wash

TIPS: Wash

- Washes are concentrated, therefore adding water is recommended. Mix only the amount you are planning to use.
- Washes can be applied in a variety of ways, but are often painted into textured areas and wiped away on the higher surface to accentuate the texture.
- Can be fired from cone 06-10.



Stoneware White Casting Slip



SLS01

Slip casting is an efficient way to make interesting ceramic forms and is a great way to mass produce ceramic shapes. Use casting slip with plaster molds for a wide variety of pieces, shapes and sizes. Sold in a two gallon box. Liquid and ready to pour. Soft bisque fire to cone 04 and glaze fire to cone 05/6.

Stoneware Glaze Assortment Kits

Mayco Stoneware Glaze assortment kits offer a variety of colors, finishes and endless possibilities for glaze combinations. **Value priced** in sets of 6, wide mouth pint jar sizes, **perfect for the studio or classroom.**

Stoneware Stars - SWKIT3

This collection of Stoneware glazes offers Mayco's top-selling colors for a broad spectrum of color shades and numerous glaze combination possibilities.



SWKIT3 Contains 6 – pints of the following colors.



SW-119
Cinnabar



SW-100
Blue Surf



SW-108
Green Tea



SW-131
Birch



SW-101
Stoned Denim



SW-106
Alabaster

Stoneware Crystal - SWKIT4

The Stoneware Crystal collection provides an assortment of Mayco's unique crystal glazes, designed to expand upon the surface with bursts of color where crystals lay. Use alone or in combination with Mayco Stoneware glazes.



SWKIT4 Contains 6 – pints of the following colors.



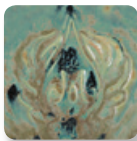
SW-115
Midnight Rain



SW-116
Robin's Egg



SW-118
Sea Salt



SW-146
Aurora Green



SW-147
Moonscape



SW-148
Lime Shower

Cone 10 Results for Stoneware Glazes

Mayco Stoneware glazes are intended for use at Cone 5/6 but many are also pleasing and stable at Cone 10. For Cone 10 performance results, review the individual glaze label or visit the Stoneware Glaze Cone 10 Gallery on our website for the entire line. Due to variability in clay bodies and kiln personalities, we recommend testing prior to application to artwork.



SW-100
Blue Surf



SW-109
Capri Blue



SW-101
Stoned Denim



SW-121
Smoke



SW-108
Green Tea



SW-125
Purple Mint



SW-128
Cordovan



SW-133
Copper Ore



SW-130
Copper Jade



SW-129
Copper Float



SW-119
Cinnabar



SW-112
Tiger's Eye



SW-127
Olivine



SW-122
Maycoshino



SW-131
Birch



SW-132
Mirror Black



SW-124
Matte Maycoshino



SW-103
Sisal



SW-104
Black Walnut



SW-111
Wrought Iron



SW-140
Black Matte



SW-105
Frost Sage



SW-102
Silver Sage



SW-106
Alabaster



SW-209
Charcoal

Cone 10 Results for Stoneware Glazes



SW-208
Camel



SW-204
Amber Topaz



SW-203
Root Beer



SW-206
Melon



SW-205
Coral



SW-207
Chambray



SW-123
Sapphire



SW-211
Glacier Blue



SW-212
Peacock



SW-120
Northern Woods



SW-210
Emerald



SW-250
White Opal



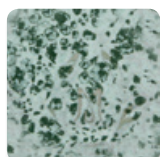
SW-251
Pink Opal



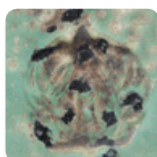
SW-252
Blue Opal



SW-253
Green Opal



SW-148
Lime Shower



SW-146
Aurora Green



SW-150
Celadon Bloom



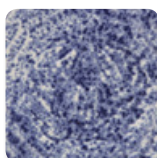
SW-147
Moonscape



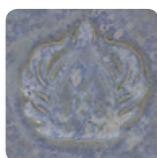
SW-154
Shipwreck



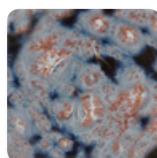
SW-115
Midnight Rain



SW-152
Blue Splatterware



SW-116
Robin's Egg



SW-156
Galaxy



SW-118
Sea Salt



SW-155
Winter Wood



SW-117
Honeycomb

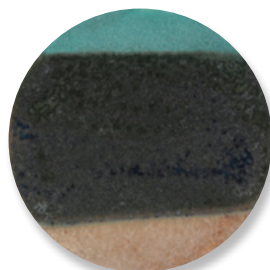
TIP:

- Mayco Stoneware glazes are stable at cone 10 with dynamic effects and color variations.
- The choice of clay body, thickness of glaze application, firing process and temperature will affect the fired results. Always test in your kiln on your clay body.

Stoneware Glaze Combinations

Artists, students, teachers and hobbyists can achieve these incredible finishes with a simple, two-glaze combination. The top third of the chip shows a single Mayco Stoneware glaze, the bottom third shows a second Mayco Stoneware glaze. The middle third is the area where the two intersect to make stunning glaze combinations. All combination chips are on a white stoneware body, fired in cone 6 oxidation.

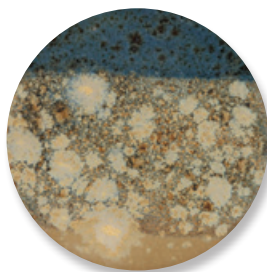
Visit us online for more Mayco Stoneware Glaze Combinations and inspiration.



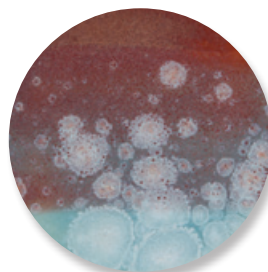
SW-164 Satin Patina
under
SW-126 Polished Pebbles



SW-1155 Winterwood
under
SW-110 Oyster



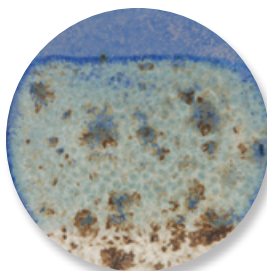
SW-154 Shipwreck
under
SW117 Honeycomb



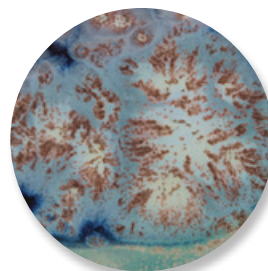
SW-150 Celadon Bleu
under
SW-113 Speckled Plum



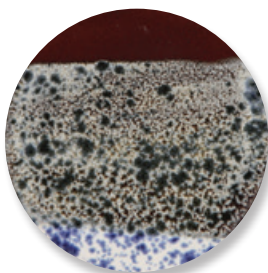
SW-155 Winterwood
under
SW-108 Green Tea



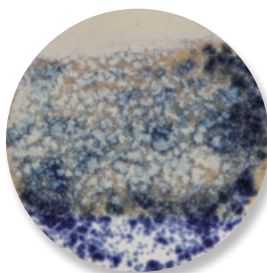
SW-155 Winterwood
under
SW-109 Capri Blue



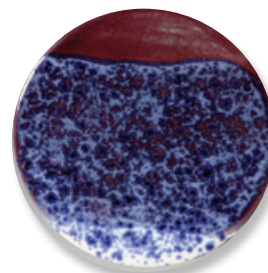
SW-156 Galaxy
under
SW-108 Green Tea



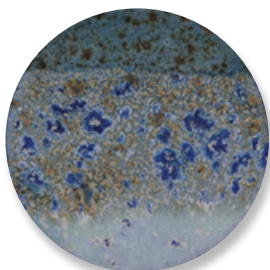
SW-152 Blue Splatterware
under
SW-128 Cordovan



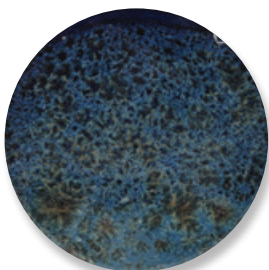
SW-152 Blue Splatterware
under
SW-131 Birch



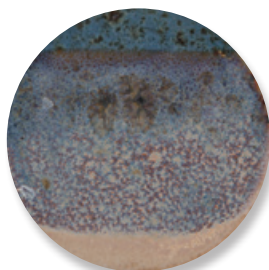
SW-152 Blue Splatterware
under
SW-125 Purple Mint



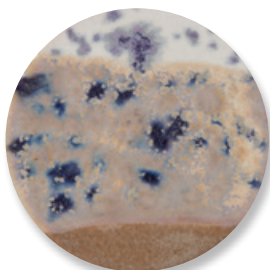
SW-154 Shipwreck
under
SW-116 Robin's Egg



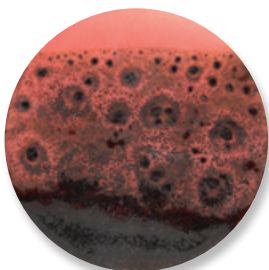
SW-154 Shipwreck
under
SW-120 Northern Woods



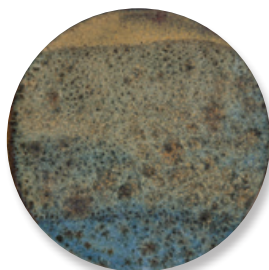
SW-154 Shipwreck
under
SW-110 Oyster



SW-153 Indigo Rain
under
SW-110 Oyster



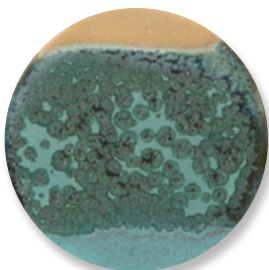
SW-2163 Soft Red Matte
under
SW-111 Wrought Iron



SW-154 Shipwreck
under
SW-112 Tiger's Eye



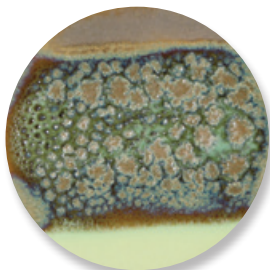
SW-155 Winterwood
under
SW-120 Northern Woods



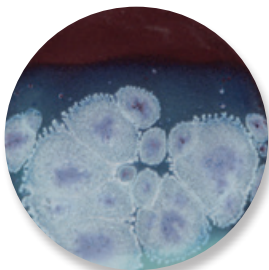
SW-164 Satin Patina
under
SW-126 Polished Pebbles



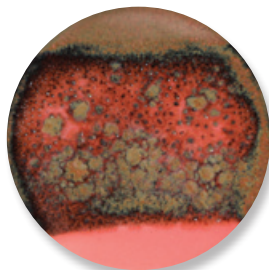
SW-154 Shipwreck
under
SW-126 Polished Pebbles



SW-160 Chartreuse
under
SW-127 Olivine



SW-150 Celadon Bloom
under
SW-125 Purple Mint



SW-163 Soft Red Matte
under
SW-130 Copper Jade



Mayco Colors
Coloramics, LLC
4077 Weaver Court S.
info@maycocolors.com
www.maycocolors.com
T: 614-876-1171
F: 614-876-9904

MaycoColors.com

MC-401e