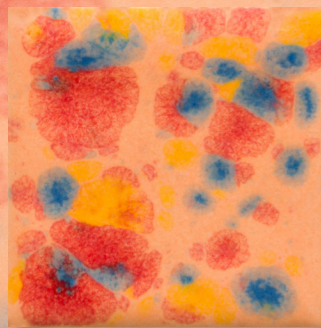





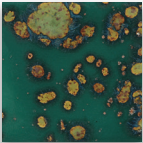

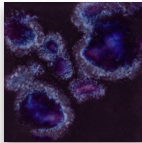

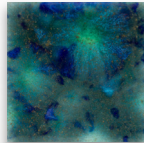

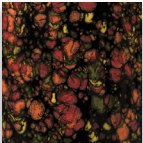

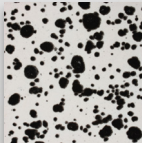

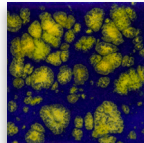

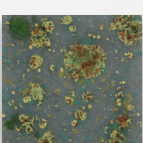

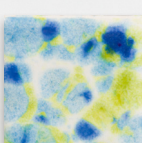

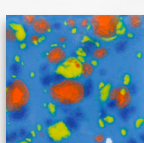
LOW-FIRE COMBO

CG1003 Peach Party

Cone 06



Technique was achieved by brushing on two (2) layers of base glaze (CG1003 Peach Party). Then apply two (2) layers of top glaze, letting glazes dry between coats.

	 <p>CG780 Mystic Jade</p> <p>over</p> <p>CG1003 Peach Party</p>		 <p>CG785 Royal Fantasy</p> <p>over</p> <p>CG1003 Peach Party</p>		 <p>CG962 Blue Azure</p> <p>over</p> <p>CG1003 Peach Party</p>
	 <p>CG970 Masquerade</p> <p>over</p> <p>CG1003 Peach Party</p>		 <p>CG977 Ink Spots</p> <p>over</p> <p>CG1003 Peach Party</p>		 <p>CG990 Starry Night</p> <p>over</p> <p>CG1003 Peach Party</p>
	 <p>CG991 Mountain Moss</p> <p>over</p> <p>CG1003 Peach Party</p>		 <p>CG1001 Gogh Iris</p> <p>over</p> <p>CG1003 Peach Party</p>		 <p>CG1007 Blueberry Bubblegum</p> <p>over</p> <p>CG1003 Peach Party</p>

MB1556 Textured Bud Vases shown are fired to Cone 06.



MaycoColors.com

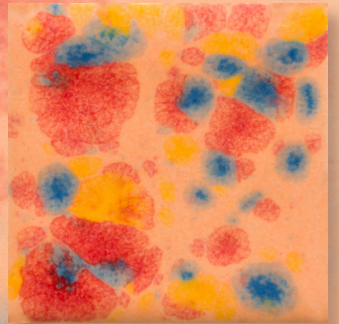




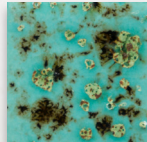
LOW-FIRE COMBO

CG1003 Peach Party

Cone 06



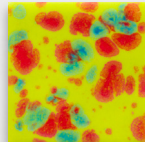
Technique was achieved by brushing on two (2) layers of base glaze (CG1003 Peach Party). Then apply two (2) layers of top glaze, letting glazes dry between coats.



CG1008
Blue Guppy

over

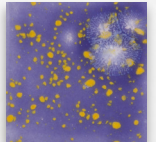
CG1003
Peach Party



CG1009
Cherry Limeade

over

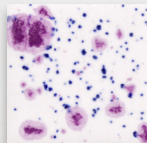
CG1003
Peach Party



CG1010
Periwinkle Sky

over

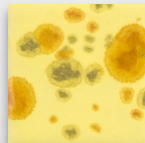
CG1003
Peach Party



CG1011
Frosted Berries

over

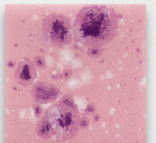
CG1003
Peach Party



CG1012
Haystack

over

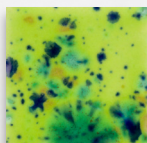
CG1003
Peach Party



CG1014
Pink Plum

over

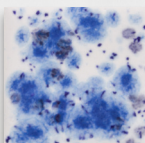
CG1003
Peach Party



CG1015
Cloverfield

over

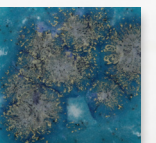
CG1003
Peach Party



S2701
Peacock

over

CG1003
Peach Party



S2711
Tahiti Grape

over

CG1003
Peach Party



MB1556 Textured Bud Vases shown are fired to Cone 06.

MaycoColors.com

