




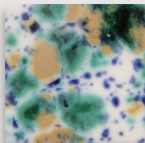

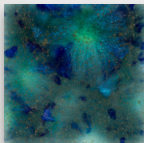

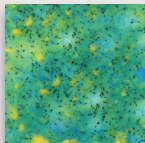



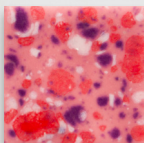

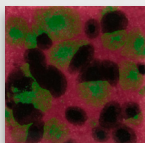

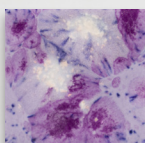

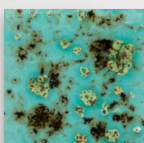

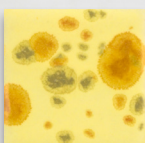
LOW-FIRE COMBO

EL212 Spotted Walnut

Cone 06



Technique was achieved by brushing on two (2) layers of base glaze (EL212 Spotted Walnut). Then apply two (2) layers of top glaze, letting glazes dry between coats.

	 <p>CG722 Seawind over EL212 Spotted Walnut</p>		 <p>CG962 Blue Azure over EL212 Spotted Walnut</p>		 <p>CG979 Meadow over EL212 Spotted Walnut</p>
	 <p>CG981 Fruity Freckles over EL212 Spotted Walnut</p>		 <p>CG1004 Berry Tart over EL212 Spotted Walnut</p>		 <p>CG1005 Maroon Lagoon over EL212 Spotted Walnut</p>
	 <p>CG1006 Purple Reign over EL212 Spotted Walnut</p>		 <p>CG1008 Blue Guppy over EL212 Spotted Walnut</p>		 <p>CG1012 Haystack over EL212 Spotted Walnut</p>

MB1556 Textured Bud Vases shown are fired to Cone 06.



MaycoColors.com





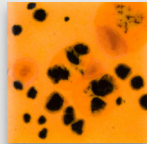
LOW-FIRE COMBO

EL212 Spotted Walnut

Cone 06



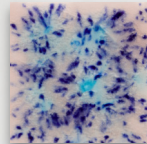
Technique was achieved by brushing on two (2) layers of base glaze (EL212 Spotted Walnut). Then apply two (2) layers of top glaze, letting glazes dry between coats.



CG1013
Papaya

over

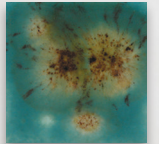
EL212
Spotted Walnut



S2702
Northern Lights

over

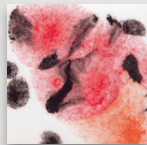
EL212
Spotted Walnut



S2424
Lotus Blossom

over

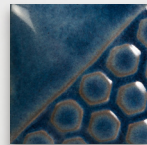
EL212
Spotted Walnut



S2727
Poppy Fields

over

EL212
Spotted Walnut



EL118
Blue Grotto

over

EL212
Spotted Walnut



EL127
Rose Granite

over

EL212
Spotted Walnut



EL130
Sea Green

over

EL212
Spotted Walnut



MB1556 Textured Bud Vases shown are fired to Cone 06.

MaycoColors.com

