



LOW-FIRE COMBO

CG1002 Day Lily

Cone 06



Technique was achieved by brushing on two (2) layers of base glaze (CG1002 Day Lily). Then apply two (2) layers of top glaze, letting glazes dry between coats.

	 <p>CG722 Seawind over CG1002 Day Lily</p>		 <p>CG969 Floral Fantasy over CG1002 Day Lily</p>		 <p>CG970 Masquerade over CG1002 Day Lily</p>
	 <p>CG981 Fruity Freckles over CG1002 Day Lily</p>		 <p>CG982 Mixed Melon over CG1002 Day Lily</p>		 <p>CG983 Koi Pond over CG1002 Day Lily</p>
	 <p>CG1000 Mardi Gras over CG1002 Day Lily</p>		 <p>CG1003 Peach Party over CG1002 Day Lily</p>		 <p>CG1004 Berry Tart over CG1002 Day Lily</p>



MB1556 Textured Bud Vases shown are fired to Cone 06.

MaycoColors.com

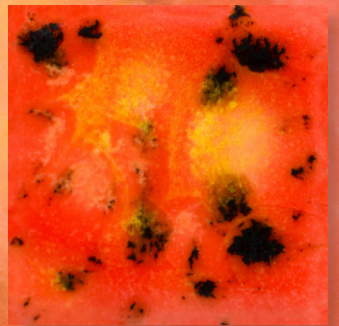




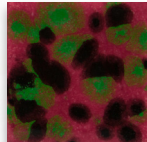
LOW-FIRE COMBO

CG1002 Day Lily

Cone 06



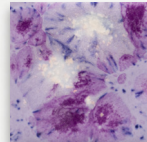
Technique was achieved by brushing on two (2) layers of base glaze (CG1002 Day Lily). Then apply two (2) layers of top glaze, letting glazes dry between coats.



CG1005
Maroon Lagoon

over

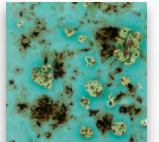
CG1002
Day Lily



CG1006
Purple Reign

over

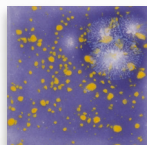
CG1002
Day Lily



CG1008
Blue Guppy

over

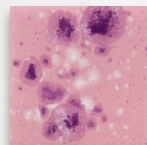
CG1002
Day Lily



CG1010
Periwinkle

over

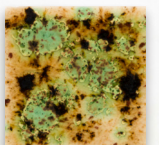
CG1002
Day Lily



CG1014
Pink Plum

over

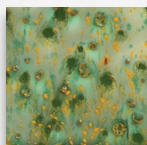
CG1002
Day Lily



S2709
Cappuccino Mint

over

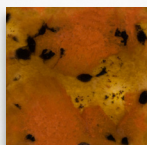
CG1002
Day Lily



S2714
Herb Garden

over

CG1002
Day Lily



S2725
Safari

over

CG1002
Day Lily



S2726
Cheetah

over

CG1002
Day Lily



MB1556 Textured Bud Vases shown are fired to Cone 06.

MaycoColors.com

